

Feng Shui For Business

Activate your Wealth & Prosperity Corner



Annette Kurtz



Discover the inherent Flow of your Business

Before activating the wealth and prosperity area of your business, a first helpful step is to take a tour through your business and notice its inherent atmosphere, the arrangement of furniture, decoration and order of things. Does it reflect the goals you wish to achieve? The team who works here? Is there a coherent flow?

1

Take a tour through your business with an open mind and the eyes of a benevolent visitor, go from area to area.

2

Does it look and feel like a productive and prosperous place? Are your business values reflected?

4

Take note:
What is out of place?
Unfinished?
Not functioning?
No longer needed?

3

Do you come across areas that are not flowing well, feel stagnant or are too crowded?
What is the reason?

5

Take action and change it.
It will improve the flow of your business.

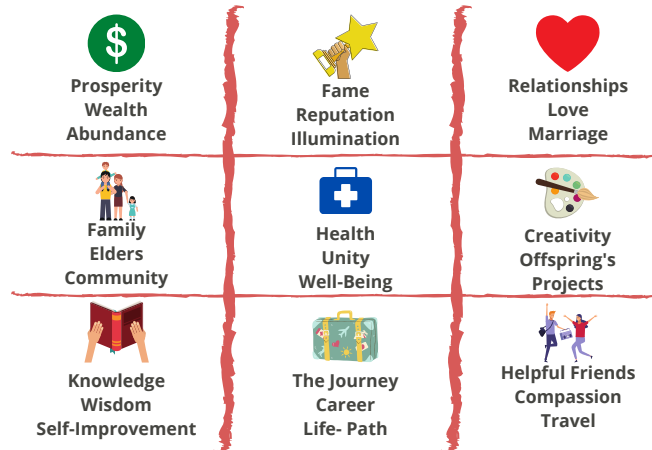


Please rearrange furniture at your own discretion. Avoid shifting or lifting items that are too heavy, get support!

Establish the Bagua for your Business

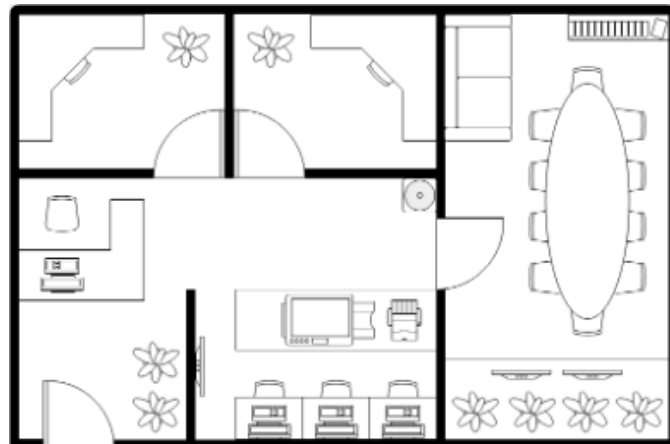
01. The Bagua Map

"Bagua" means 8 trigrams arranged around a center. The 8 trigrams are considered the 8 corners of a business and adding the center makes it 9 areas of life.



02. Your Floorplan

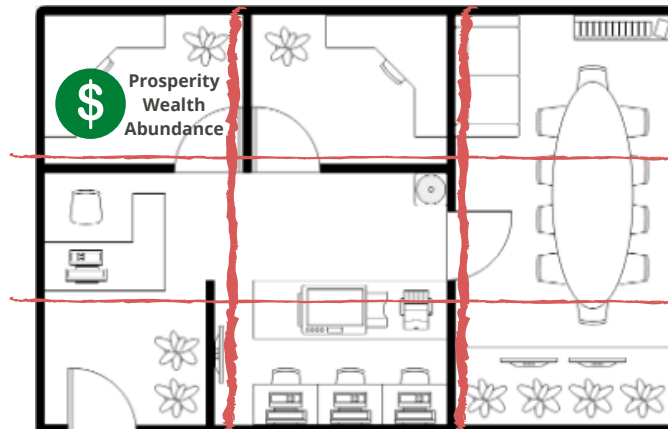
This is an example of a floorplan. Get a copy of your floorplan or draw one up. Turn it so the entrance to your business is located at the bottom of the sheet.



Entrance

03. Discover the 9 Life Areas in Your Business

Divide your floorplan into 9 equal parts and place the Bagua Map on top. To change an aspect of your business, change the flow in that area of your floor plan.



Entrance



Activate your Wealth & Prosperity Corner

01

Start with the Bagua Map and apply the Bagua to your Business or Office Space. Include the furniture you have in your space, too.

02

Standing at the entrance of your business looking into the space, you find the wealth and prosperity corner in the top left corner.

Look for  on the Bagua Map.

03

Make sure there are no stagnancies in your wealth and prosperity corner, everything functions properly, operations run smoothly and the energy flows easily and unobstructed.

04

Check your money beliefs: What is your relationship to prosperity? Are your prosperity beliefs aligned with what you wish to attract? Are you aware of all the money flows in and out of your business?

05

Activate your wealth and prosperity corner. Make sure this area is well lit and the energy is flowing! A team member making calls or even a frequently used printer is an active principle.

06

You can apply the Bagua Map to find your wealth and prosperity corner and enhance your money luck in your entire business, your office or even at your desk.

